



Powerful, Light Weight Unit Ideal for
Large, Small or Mixed Animal Practice

HF100+ ultra light

MinXray's **HF100+** ultra light, high frequency portable X-ray unit is a versatile unit designed to meet the most challenging portable X-ray imaging situations. High power and low weight makes it ideal for both large and small animal imaging.

- high frequency x-ray generation for maximum power and compact size
- state-of-the-art electronic design for consistent performance
- fully compatible with all digital systems
- best in the industry – 5 year limited warranty

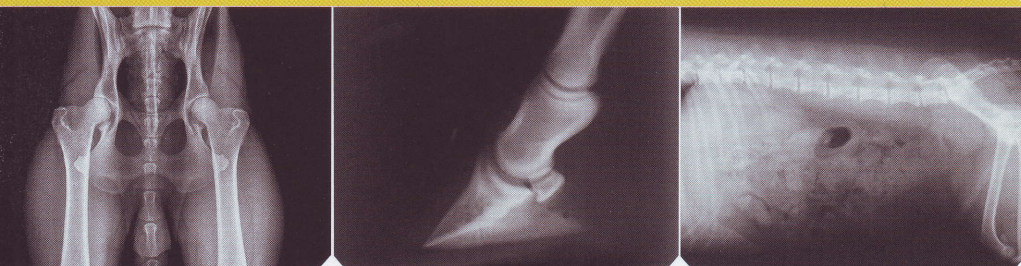
Large touch-pad control



mAs or exposure time display option

Adjustable, dual laser pointers

Easily programmed for storage of five exposure techniques



MINXRAY® INC.
EXCELLENCE IN IMAGING SINCE 1967

WWW.MINXRAY.COM

High Frequency Design

MinXray's full-wave rectified high frequency units are the most efficient portable x-ray generators in the world. Conventional units (self rectified, line frequency) are only about one-third as efficient as these technologically advanced units. Therefore, considerably more radiation output per pound of system weight is available from the MinXray HF designs. As an added benefit, the output of these units is independent of line voltage variations... a very important feature for field use.

HF100+

| | |
|-------------------------|---|
| Electronic Design | Computer-controlled, high frequency, full-wave rectified |
| X-ray Output | 40 mA @ 40 – 50 kVDC, 35 mA @ 52 – 60 kVDC, 30 mA @ 62 – 70 kVDC, 25 mA @ 72 – 80 kVDC, 20 mA @ 82 – 100 kVDC |
| AC Input | 110 VAC – 240 VAC 50/60 Hz |
| Line Voltage Adjustment | Automatic, dynamic |
| Timer | Ultra high resolution, 0.01 – 2.0 sec., (61 total steps) |
| Internal Power Supply | 60 kHz Resonating High Frequency inverter system |
| X-ray Tube | Toshiba D-124K |
| Focal Spot Size | 1.2 mm |
| Anode Heat Storage | 20 kHU |
| Total Filtration | 2.7 mm Al equivalent |
| Collimator | Continuously adjustable light beam type with adjustable dual integrated laser pointers |
| LP4 Laser Pointers | Class IIIa maximum output < 5.0mW, wavelength 600-680M |
| Exposure Switch | Two stage deadman type |
| Exposure Cord | 8 feet (2.4 meters) |
| Power Cord | 20 feet (6.1 meters) |
| Size | 9.45 x 7.72 x 14.37 inches (24 x 19.6 x 36.5 cm) |
| Weight | 24.2 lb (11 kg) |

Ordering Information

HF100+ Ultra Light High Frequency Portable X-ray Unit:

Exposure switch and cord, power cord and carrying case

XRT100+ Compact X-ray table

300GS Mobile gas spring X-ray stand

X100S Tripod stand

X100SCC Carrying bag for X100S tripod

FS-HF Foot operated exposure switch

EFB40 Redden Equine foot block



The XRT100+ X-ray table accommodates the **HF100+** to make an ideal compact imaging system for small and mixed animal practices.



HF100+ units are supplied in a highly protective carrying case.



HF100+ mounted on the 300GS mobile stand for in-clinic imaging.

For more information about MinXray products, consult your local dealer.

3611 Commercial Avenue • Northbrook, Illinois 60062-1822, USA
1-847-564-0323 • Toll Free: 1-800-221-2245 • FAX: 1-847-564-9040
E-mail: info@minxray.com • Web: www.minxray.com

Specifications subject to change without notice.

MINXRAY®
INC.
EXCELLENCE IN IMAGING SINCE 1967

© 2009 MinXray, Inc. All Rights Reserved 5/09